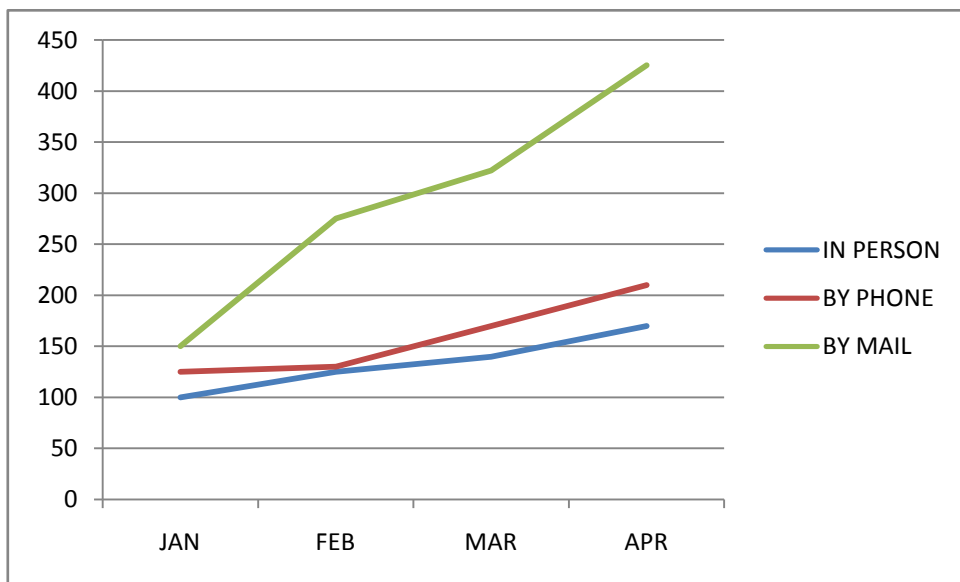


IELTS Academic Writing

Task One, sample questions

1. The graph below shows the number of enquiries received by the College Inquiry Office over a four-month period in 2018.

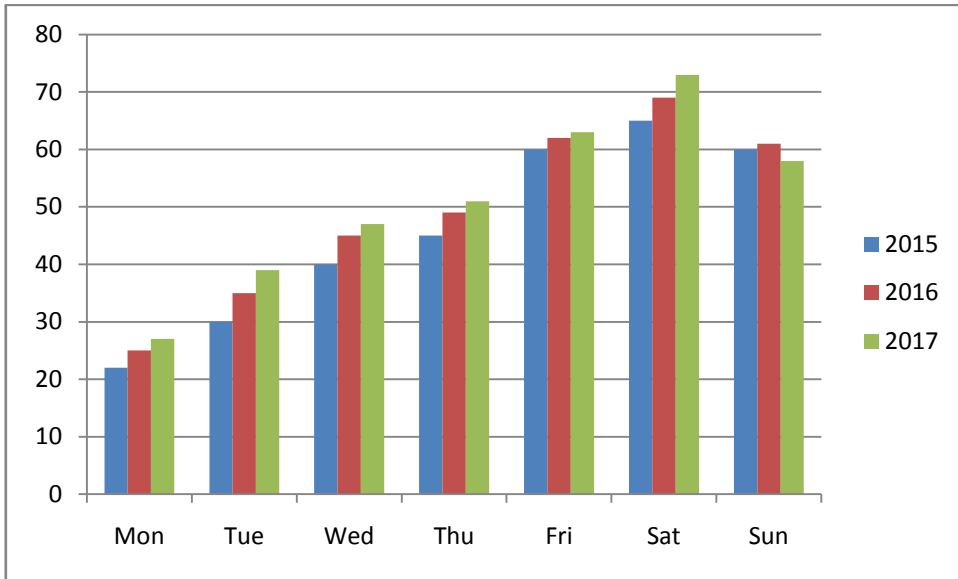
Summarize the information by selecting and reporting the main features and make comparisons where relevant.



2. The graph below shows the percentage of people going to cinemas in a City on different days of the week in the years 2015 to 2017.

Summarize the information by selecting and reporting the main features and make comparisons where relevant.

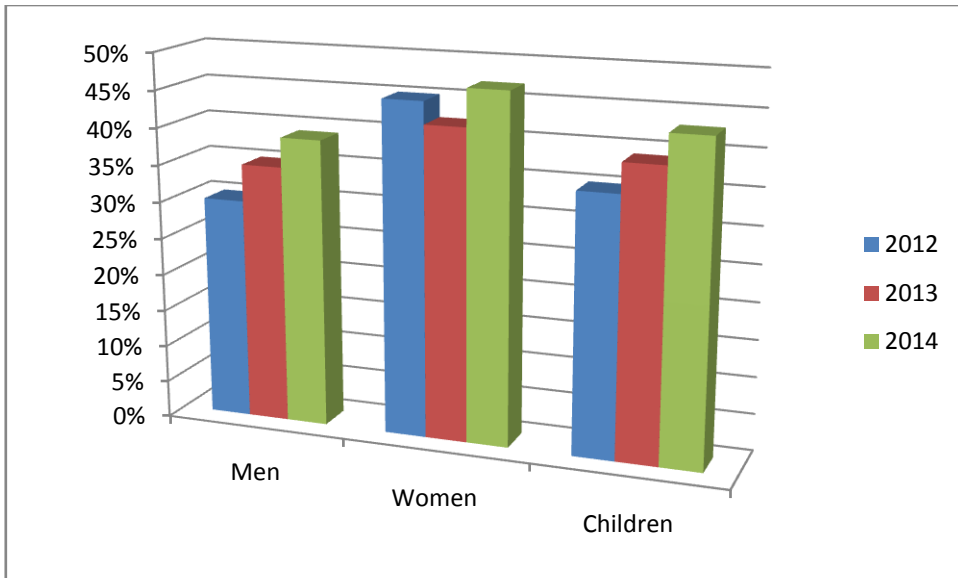
You should write at least 150 words.



3. Percentage of people in a city who consumed daily recommended amount of fruit and vegetable in 2012, 2013 and 2014.

Summarize the information by selecting and reporting the main features and make comparisons where relevant.

You should write at least **150** words.



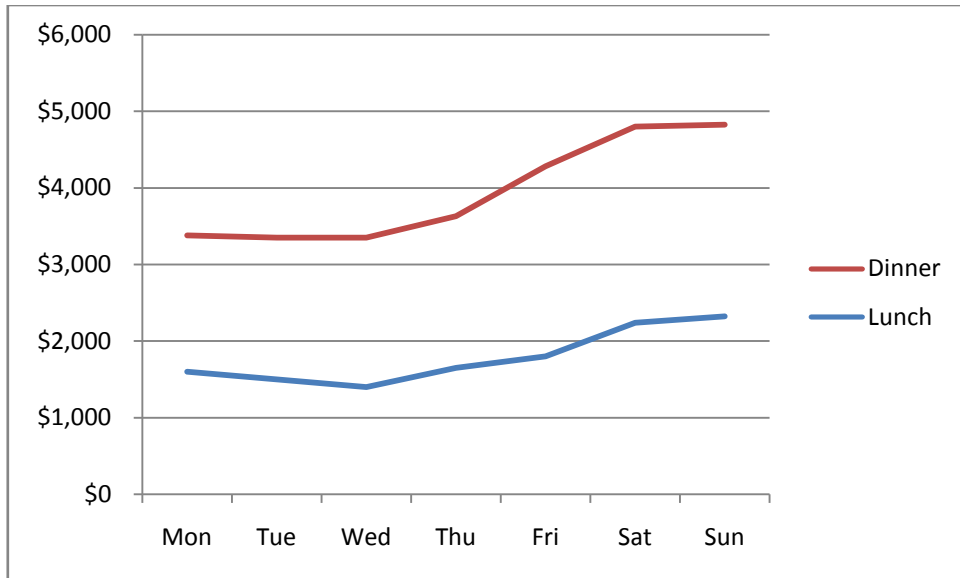
4. The table below gives information about the Metro transport service in six cities.

Summarize the information by selecting and reporting the main features, and make comparisons where relevant.

City	Year started	Kilometers of Route	Passenger per month in Millions
New Delhi	2002	239	102
Mumbai	2003	178	88
Kolkata	1998	105	73
Chennai	2012	102	67
Banglore	2014	84	54
Jaipur	2015	65	48

5. The table below shows the sales at a fine dining restaurant in a small town.

Summarize the information by selecting and reporting the main features, and make comparisons where relevant



	Mon	Tue	Wed	Thu	Fri	Sat	Sun
Lunch	\$1,600	\$1,500	\$1,400	\$1,650	\$1,800	\$2,240	\$2,325
Dinner	\$1,780	\$1,850	\$1,950	\$1,980	\$2,480	\$2,560	\$2,500

6. The two charts below show the results of a Satisfaction survey that asked visitors to a Restaurant about how they rate the customer service. The same set of questions was given to equal number of diners in the years 2017 and 2018.

Summarise the information by selecting and reporting the main features and make comparisons where relevant.

You should write at least **150** words.

7. The chart below shows numbers of incidents and injuries for different modes of transport in 2018 in a city.

Summarise the information by selecting and reporting the main features and make comparisons where relevant.

You should write at least 150 words.

